

FAXserve by 2Point Communications

FAXserve for NetWare and GroupWise – Network Faxing You Can Count On!



Improve Performance With Fast, Efficient Network Faxing

2Point FAXserve® turns your computer network into a centralized fax server making it easy to read, annotate, access and store fax documents on your network – reducing costs and increasing performance.

2Point FAXserve for Novell NetWare and GroupWise

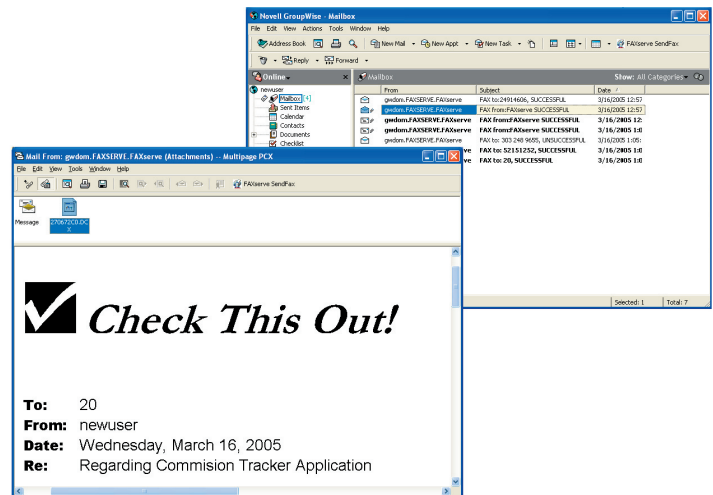
2Point FAXserve is perfect for GroupWise® faxing! Fax messages are composed, addressed and sent just like e-mail. Better yet, the same commands are used to review, forward, save and print your faxes. FAXserve for NetWare® is designed and certified for NetWare and GroupWise 6.0 and 6.5. Clients are also supported in Microsoft® Windows® 2000, Windows XP® and Windows 2003.

Desktop Highlights

- GroupWise address book for faxes
- Novell® ConsoleOne® for centralized administration
- Support for several fax hardware types
- Easy-to-use hardware configuration wizard
- Improved GroupWise client integration
- Enhanced 32-bit rendering agent
- Updated print to fax
- Improved printer routing options

Built-in Support for Windows-based Applications

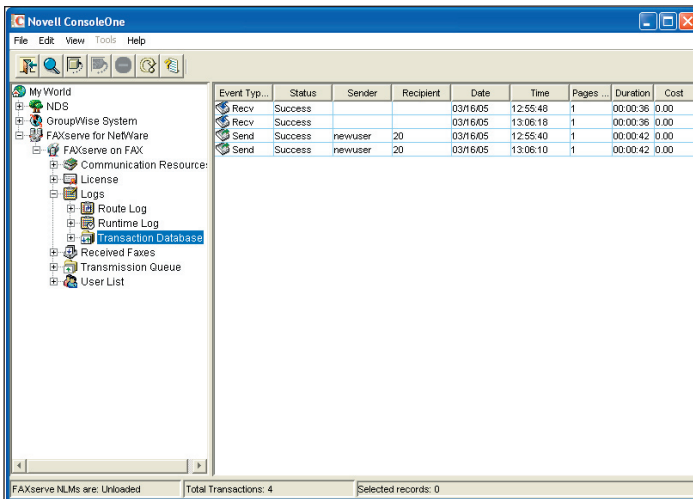
2Point FAXserve for NetWare is your best choice for combining GroupWise faxing and desktop faxing with popular Windows-based applications. Whether in GroupWise or Windows, you can fax quickly and easily without switching between applications. As a result, you don't have to learn a separate fax interface, and Network Administrators no longer need to install and manage a network fax application and separate e-mail.



Send and receive faxes directly from your GroupWise client.

2Point FAXserve is Easy to Administer

- Centralized administration
- Easy licensing model
- Flexible deployment with basic print-to-fax capabilities
- Advanced integration to e-mail and network applications
- Domain security integration
- Load balancing between multiple servers or locations
- Least-cost routing
- Multiple inbound fax routing options



Distinctive Features

The administrator can easily view all fax transmission activity on the network.

Network Compatibility

Designed for GroupWise, 2Point FAXserve employs a true native GroupWise gateway co-developed with Novell, which gives you the highest level of server integration possible – providing more client options and increased speed.

Easy to Use

Send faxes directly from any Windows application. There is no need to learn additional applications or manage separate address books to send faxes and e-mail messages.

Enhanced GroupWise Client Integration

Additional GroupWise client features include print-to-fax compose, native C3PO compose form and full address book support. These enhancements extend the full power of 2Point FAXserve to all GroupWise users. Users also have the option to render attachments either locally or remotely on a rendering agent.

Hardware Configuration Wizard

Included in the new ConsoleOne management interface, this

hardware configuration wizard makes updates, changes and additions to 2Point FAXserve easy through simple and intuitive graphical screens.

ConsoleOne Administration

Administration of 2Point FAXserve is significantly improved by integrating with Novell's ConsoleOne. Leveraging ConsoleOne combines administrative tasks of FAXserve with overall enterprise system management that includes users, printers, e-mail and other directory objects.

Centralized Administration and Reporting

Centrally configure, monitor and control every fax across the network in real time. Keep a log of all faxes sent and received in a digital format.

System Report

2Point FAXserve integrates with NetWare, Windows Server 2000 and Windows Server 2003, providing seamless operation and centralized administration. FAXserve also provides full-client support for Windows 98, Windows NT 4.x and Workstation, as well as Windows Server 2000, Windows XP Home, Windows XP Professional and Windows Server 2003.

2Point FAXserve Cost Analysis

Compared with traditional fax methods, 2Point FAXserve offers many advantages that save you time and money.

Costs	Fax Machine	FAXserve
Time to fax (minutes)	10	1
Number of faxes per day	120	120
Total time (hours)	20	2
Average labor costs	\$30/hour	\$30/hour
Total labor cost per day	\$600*	\$60
Annual Fax Costs	\$153,000	\$15,300

*Ten phone lines based on average phone line cost of \$35.00 per month (business line charge and taxes only – no usage).



2Point Communications, Inc.
2853 Clover Hill Court
Suite D
Tracy, CA 95377
+1 (800) 781-2605
+1 (209) 830-7268
www.2point.com

For more information, please contact us at

+1 (800) 781-2605 (US)

or +1 (209) 830-7268

www.faxserve.com

Copyright © 2005 2Point Communications, Inc. All rights reserved. 2Point, the 2Point logo and the 2Point product names mentioned herein are registered trademarks or trademarks of 2Point Communications, Inc. in the United States and other countries. All other marks are registered trademarks or trademarks of their respective companies.